

A close-up photograph of a bamboo grove. The image is filled with numerous vertical bamboo stalks of varying shades of green, from light lime to deep forest green. The stalks are segmented, with distinct nodes visible. Interspersed among the stalks are many long, lanceolate leaves with prominent veins. The background is a soft-focus wall of more bamboo, creating a sense of depth and a lush, natural environment. The lighting is bright and even, highlighting the textures of the bamboo and the vibrant colors of the foliage.

Plant Parts: Stem

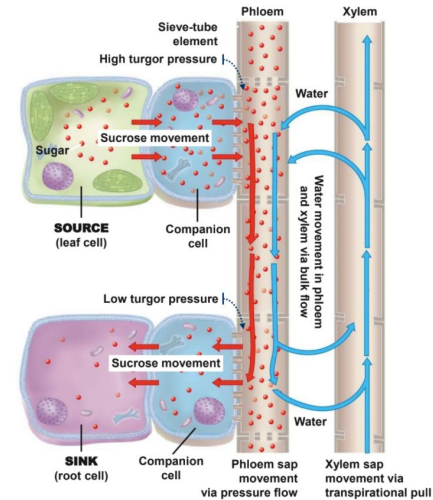
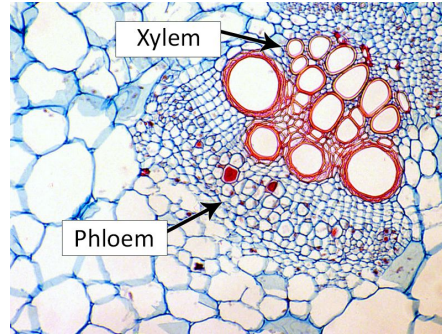
What are the functions of the stem?

- *Transports water and nutrients*
- *Supports tree canopy*
- *Barks protect the tree*



What is inside the stem?

- *Xylem, dead tissues that transport nutrients down the plant.*
- *Phloem, living tissues that transport water up the plant.*
- *Phloem becomes xylem as more phloem grows from the center of the stem.*



https://highered.mheducation.com/sites/9834092339/student_view0/chapter38/animation_-_phloem_loading.html

What stems do human eat?

- Celery
- Kale
- Green Onions
- Asparagus
- Rhubarb
- Broccoli
- Bamboo Shoots
- Leeks

