

---

---

# Red Wiggler Worms

— Make your own compost! —

---

---

# Where Do Worms Live?

**Red Wiggler Worms** live in the soil! They typically hang out in the top 6 inches (where there's usually more food), but they can tunnel a few feet into the ground! They breathe through their skin, so it's OK for them to stay underground.

Worms are part of the 10% of Living Organisms we learned about in **WAMO: Organic Matter** slides!



Image retrieved from: <https://tinyurl.com/y6bcgzeb>

Worm Castings (AKA worm poop 🐛 ) are what make soil so healthy & nutritious!

You can make a home for worms, too! With your own worm bin you can toss in worm-approved food scraps for worms to eat

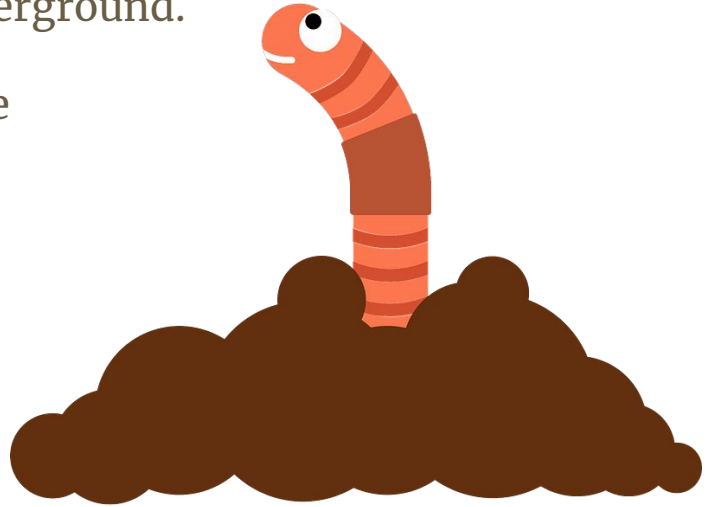
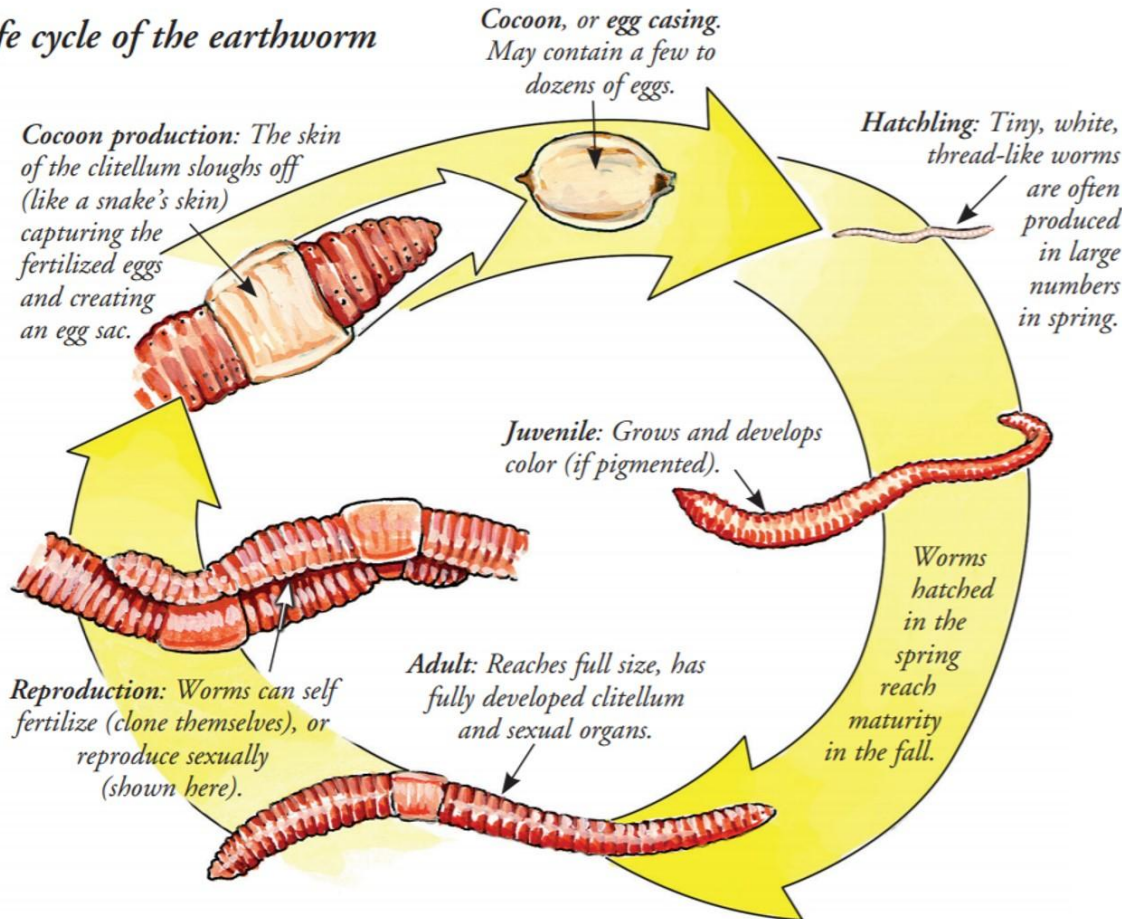


Image retrieved from: <https://tinyurl.com/y4zhr9jq>

## Life cycle of the earthworm



Life cycle of an earthworm © Rick Kollath

Image retrieved from <https://www.earthwormsoc.org.uk/lifecycle>

Worms live for about 2 years.

For Red Wigglers, any two worms are needed to make egg cocoons!

When a cocoon hatches, 1 to 20 tiny baby worms are born.

The full cycle of worms from mating to hatchling takes about one month.

# Making a Worm Bin into a Worm Home

Alternate between **Brown** and **Green** layers when making your own worm bin. Bins should also have lots of small holes on the lid & very top sides so air can get in!

**Brown** layers: strips of non-glossy paper & newspaper, paper bags, (some) cardboard, soil, dry leaves—almost all thin tree- or dirt-related things!



**Green** layers: veggies, fruit, coffee grounds, clean eggshells—anything that's worm-approved food!



# What Can I Put in my Worm Bin?



**Yes!**



Fresh fruit scraps



Fresh vegetable scraps



Egg shells, tea bags, coffee grounds



Shredded paper, dead leaves

**No!**



Bread or grains



Dairy products



Greasy foods



Meat



Sauces or oils

# Worm Care: What to Avoid

You'll know if something isn't right with the worms' food or home, because they'll try to escape the bin!

Bins should be moist, but **not wet**! If the bin is too wet, add some dry newspaper.

Too much food in a bin will start to rot because the worms can't eat it quick enough! Keep an eye on how much food is left in the bin each week.

Avoid adding too much citrus, like **oranges**! Worms don't like citrus fruits very much.



## More Worm-Care Resources

*Worms Eat My Garbage* by Mary Appelhof is a great resource!

Check your local library's website for copies of *Worms Eat My Garbage*, and for other books about worm-care!

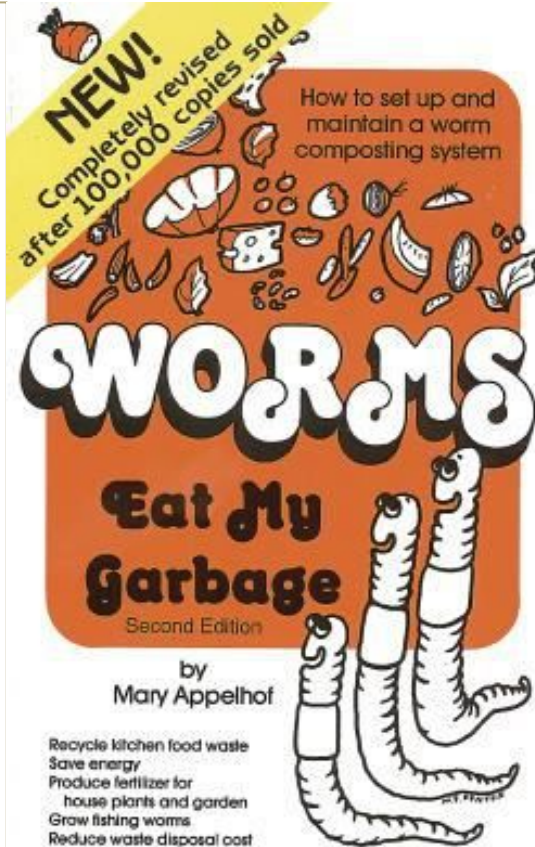


Image retrieved from: <https://tinyurl.com/yywep2xe>

Sauvie Island Center also has multiple resources available online to learn more about worms and their care!